

Fast true 3D laser scan with color texture

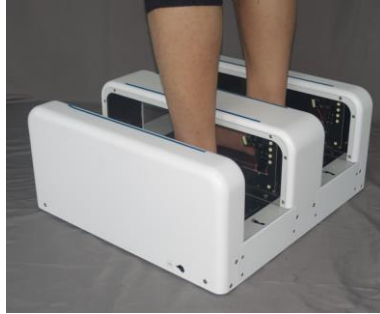
Auto landmark, measurement, and analysis report

Custom shoes and orthotic insoles for foot clinics and retail stores

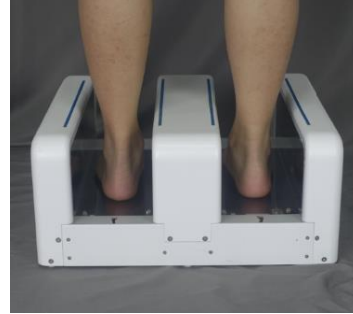
XPOD-SS2 is the two feet version of XPOD-S (Same optics)



XPOD-S vs XPOD-SS2



XPOD-SS2

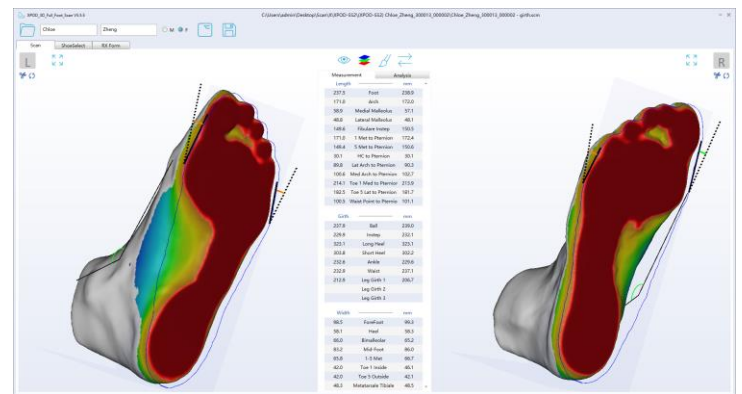
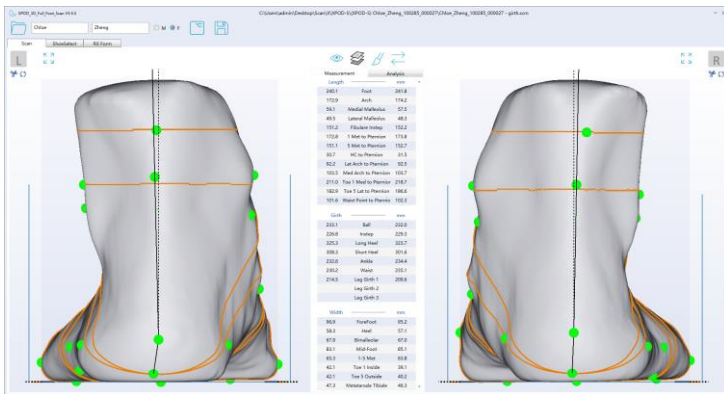
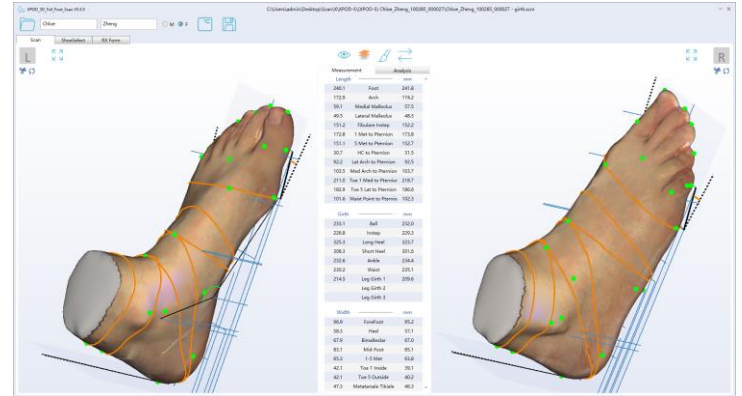
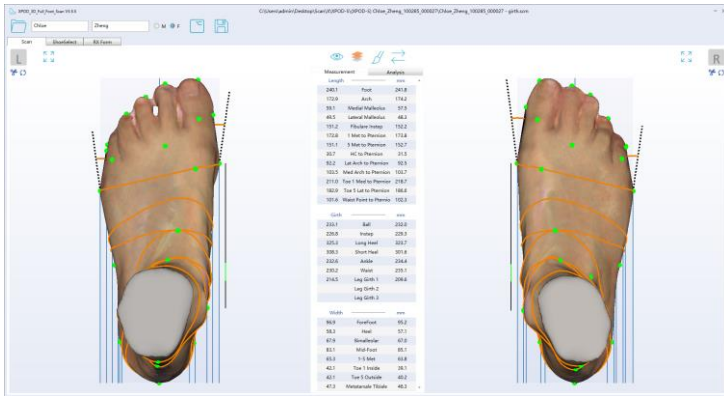


XPOD-SS2

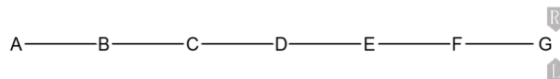


XPOD-SS2

XPOD Software improves on UPOD software (Same file formats)



	Left	Right
Foot Length (mm)	240.1	241.8
Foot Width (mm)	96.9	95.2
Ball Girth (mm)	233.1	232.0
Toe Type	Egyptian	Egyptian
Shoe Size (EU)	38.5	39.0
Shoe Width (EU)	G	G



Heel Angle	Left: 1 Inv	Right: 0	
Arch Index	Left: 0.15	Right: 0.21	
Hallux Angle	Left: 15.8	Right: 16.6	

XPOD-SS2 Hardware

- Full-foot 3D with color in non/semi/full-weight
- Foam Impression and Shoe Last
- High Speed 2.7s; Normal Speed 7.8s
- Minimum CPU i5-1240P 16G RAM
- Integrated GPU OK; Min 1080P display
- Software UI to activate scan. No foot switch.
- Normal lighting, open top coverless scan
- Clean 3D mesh, +/- 1.0mm accuracy
- Scan Volume 330L X 130W X 115H mm
- Size: 475L X 494W X 216H mm
- Weight: 11Kg (24Lb)
- Load Capacity: 180 Kg (397Lb)
- Power adapter AC 100-240V; DC 12V/5A
- Customizable panels design and color
- CE/FDA/PSE certification/registration
- One-year limited warranty

XPOD Software

- Win10/11, doesn't support Win7/8
- Auto 30 Landmark and 43 Measurements
- Auto analysis for arch type, bunion, and heel angle
- Mark landmarks on foot then drag points to match
- PDF Foot report with manual annotations
- [User-editable report templates, sell your own brand](#)
- [User-define UI and icon color and your local language](#)
- [Shoe size/width output for US/UK/EU/CN/JP standards](#)
- 3D format STL/WRL/OBJ/PLY, 2D format JPG/PNG, PDF report, CSV data file
- FTP send order to shoe/insole fabrication
- User-define RX form for orthopedic shoe/insole
- Developers: CMD/EXE call scanner to receive data-integration into your own CAD software and database
- Optional encrypt scanners to lock files
- [Also support UPOD-S and UPOD-HD scanners](#)

XPOD-SS2 Laptop Configuration

- Scanner, two USB Cables (two red USB plugs), two USB hubs, and Power Adapter.
- You supply: Laptop or desktop PC with monitor/keyboard/mouse.



XPOD-SS2 Pedestal Configuration

- Scanner, Pedestal, two USB Cables (two red USB plugs), two USB hubs, and Power Adapter. Pedestal has VESA mounting holes for PC and monitor. Mini-PC to be mounted behind the monitor. Pedestal is delivered disassembled to reduce shipping size. Weight is 5KG.
- You Supply: Mini-PC (Intel NUC 12th Gen or equivalent) and Touch Monitor (VESA mounting).
- Optional: We supply Mini-PC with Touch Monitor.

